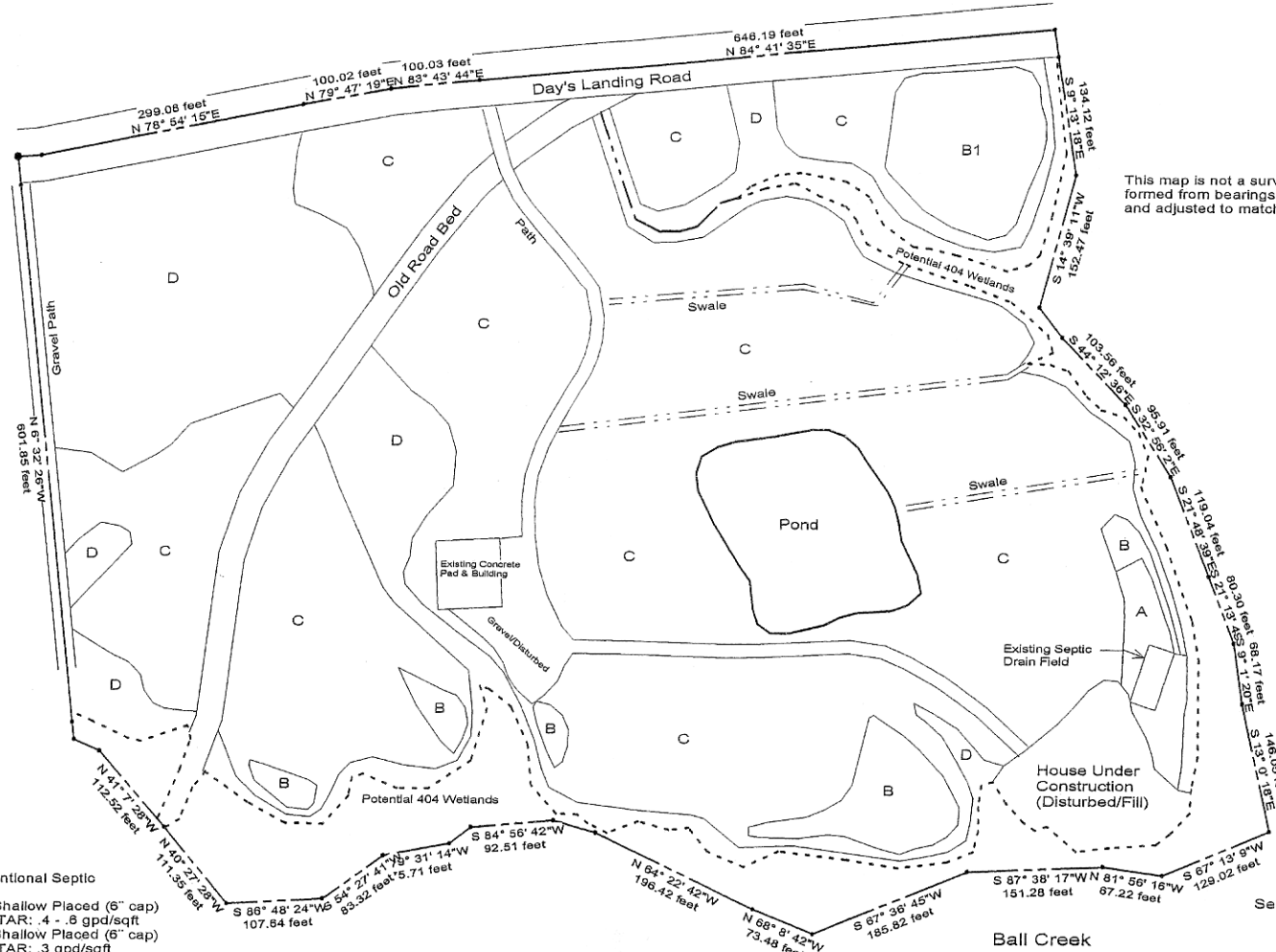


Preliminary Soil/Septic Suitability Map For Wayne Dunlap
 +/- 24.12 Acres, Day's Landing Road
 Pamlico County, North Carolina

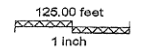


This map is not a survey. The boundary of this map was formed from bearings and distances provided to ESS and adjusted to match GPS data collected by ESS.

Legend

- A - Provisionally Suitable For Conventional Septic Systems; LTAR: .4 - .6 gpd/sqft
- B - Provisionally Suitable For Ultra-Shallow Placed (6" cap) Conventional Septic Systems; LTAR: .4 - .8 gpd/sqft
- B1- Provisionally Suitable For Ultra-Shallow Placed (6" cap) Conventional Septic Systems; LTAR: .3 gpd/sqft
- C - Provisionally Suitable For Fill (mound) Septic Systems; LTAR: .3 gpd/sqft
- D - Unsuitable For Septic Systems
- - - - Potential 404 Wetland Line

See Report For More Detail



Environmental & Soil Service, Inc.
 P.O. Box 82
 Pinetops, NC 27864